

# The O'Dea Families

...from the Parish of Aglishcormick

[Main Page](#)[O'Dea Families](#) ▼[Emmigrants](#) ▼[Surname Index](#)[Master Index](#)[Charts](#)[Photographs](#)[Place Index](#)[Parishes](#)[Search](#)

Catherine Sampson O'Dea (left front) and her daughter Catherine O'Dea in front of the O'Dea Homestead North of Killeely

There is a legend among the O'Dea families in the Townland of Miltown in the ancient Parish of Aglishcormick, County Limerick, that the O'Deas originated in County Clare, that four brothers were evicted from their land, and that they were traveling to Queenstown (Cobh) in County Cork to emigrate. When they reached County Limerick, two brothers decided to settle in Aglishcormick. The other two emigrated, were never heard from again, and are known as the "lost O'Deas." Although there is no documentation to support this legend, it is not an unlikely story, and it provides a convenient place to start a history of the O'Deas in Aglishcormick and the various Day Families that emigrated.

Compilers: **Dennis Day and Eddie O'Dea**

Site updated on 6 Jun 2016 at 11:09:57 AM DB irishdays; 846 people

Page created by John Cardinal's Second Site v6.1.0. | Theme created by DayxDay

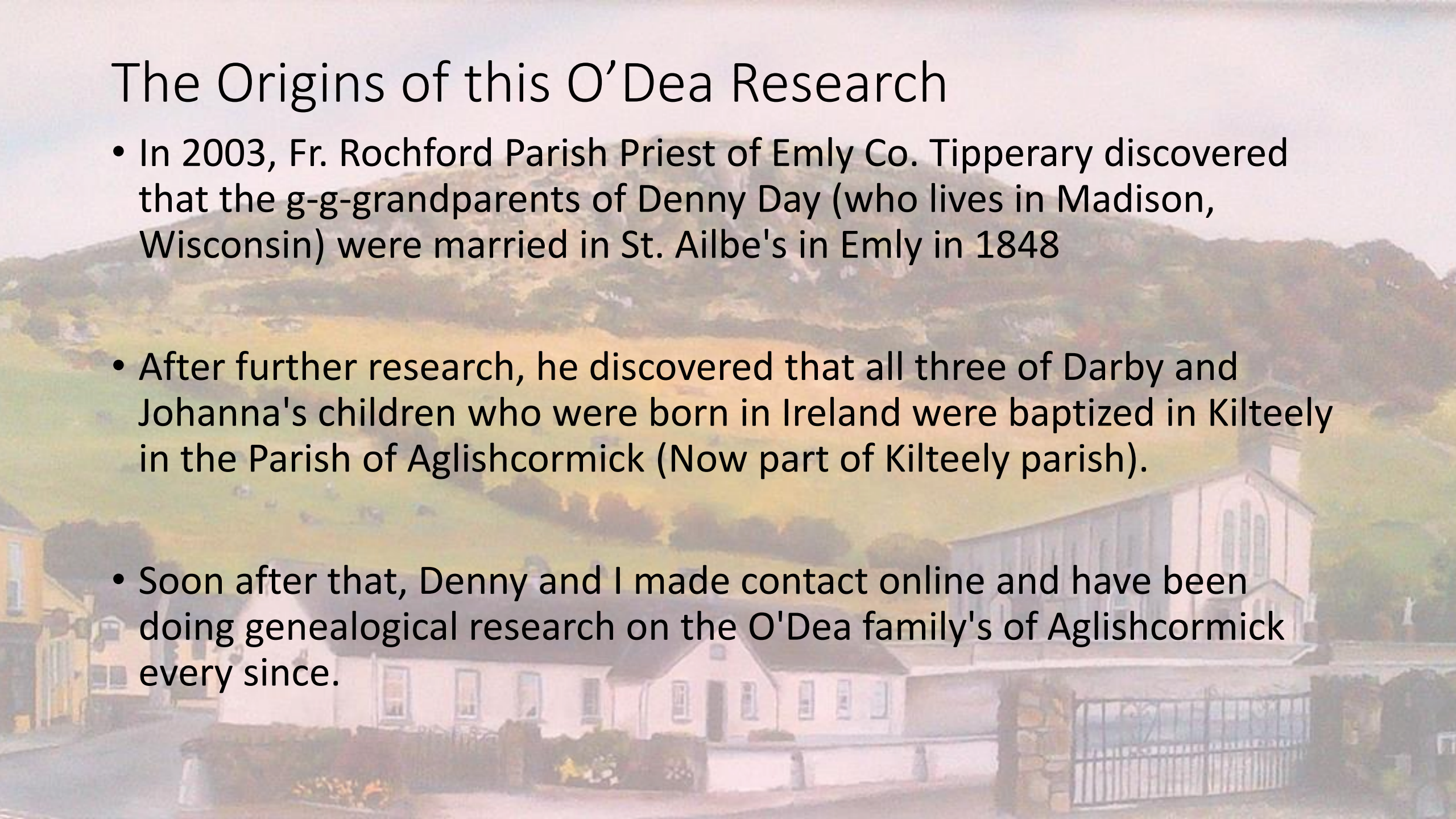






# The Origins of this O'Dea Research

- In 2003, Fr. Rochford Parish Priest of Emly Co. Tipperary discovered that the g-g-grandparents of Denny Day (who lives in Madison, Wisconsin) were married in St. Ailbe's in Emly in 1848
- After further research, he discovered that all three of Darby and Johanna's children who were born in Ireland were baptized in Kildeely in the Parish of Aglishcormick (Now part of Kildeely parish).
- Soon after that, Denny and I made contact online and have been doing genealogical research on the O'Dea family's of Aglishcormick every since.



# The Origins of this O'Dea Research

- **Besides the connection with Denny's family in Illinois and then later in Iowa, I also discovered links to other branches of the family in New York and Australia.**
- **By 2012, Denny and I had exhausted many if not most of the paper records related to our two branches of the family and, although we knew we were related, we still did not know specifically how. We decided to test our DNA using the Y-DNA111 test and soon thereafter added the L226 test as well. We discovered immediately that we were either 5th or 6th cousins.**



# The Origins of this O'Dea Research

- In Kildeely, there are many O'Deas and one of these, Patrick, we knew was descended from a common ancestor, but probably not the one Denny and I shared. Patrick had the same two DNA tests completed that we had and, without going into any great detail, we were able to determine that the following chart best describes the relationship between the three of us:

The Carmelite Abbey

Miltown

The chart shows DNA characteristics that distinguish our three branches and indicates that Denny and I are 5th cousins once removed and that Pat and I are 6th cousins and Pat and Denny are 6th cousins once removed. What is most interesting about this chart is that it allows us to relate with confidence our line of the O'Dea family to paper records such as the Tithe Records of 1826 and to an older estate map from the Philpot Wolfe estate from 1769. Lastly, although we have no paper record of him, we can now postulate a common ancestor, a *Pater Familias*, who gave rise to all of the families from which we are descended and who probably lived in the early 18th century, most likely in County Clare.

1	<i>Pater Familias (common ancestor)</i> DYS607 = 15 DYS464 = 13-13-13-17 CDY = 35-37		
2	John (elder) DYS607 = 15 DYS464 = 13-13-15-17 CDY = 37-39	Thomas (elder) DYS607 = 15 DYS464 = 13-13-13-13-15-17 CDY = 35-37	
3	Michael DYS607 = 15	John (m. Mary Apjohn) DYS607 = 15	Darby DYS607 = 16
4	Thomas (little) m. Anne Connell	Robert m. Catherine Collins	Thomas m. Ellen
5	Thomas m. Julia O'Donnell	Patrick m. Margaret Hourigan	Darby m. Johanna Murnane
6	John m. Johanna Maloney	Robert m. Mary Crehan	Darby m. Johanna Ryan
7	John m. Mary Kelly	Patrick m. Mary Cristina O'Neill	John m. Carolyn Walsh
8	Patrick	Edmond	Leo m. Nora Miller
9			Dennis



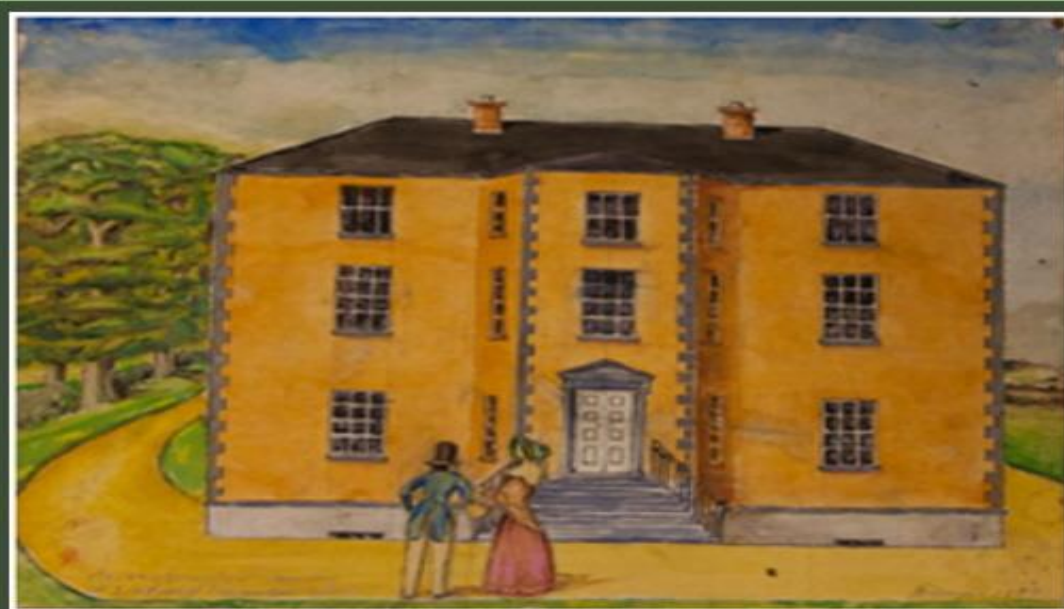
# The Apjohns of Pallasgreane

## ...from the Confederate War

[Main Page](#) [Thomas Apjohn](#) [Surname Index](#) [Master Index](#) [Charts](#) [Linfield](#) [Memorials](#) [Place Index](#) [Search](#)

The earliest references to the Apjohn family in Ireland is found 1) in County Derry between 1658 and 1682 where two Apjohns, both Curriers, and their families lived, 2) in Limerick where John Apjohn, a Soldier, died in 1655, and 3) in Dromkeen in the Parish of Grean where Thomas Apjohn lived as early as 1641. Little is known of the first two, but Thomas is the *pater familias* of the Apjohn family in County Limerick.

Thomas Apjohn, as we shall see, had two sons-Michael and William. As in most families of the period, children were named after parents and brothers and sisters; as a result, there are a plethora of Apjohns named Thomas, William and Michael and in some cases it is difficult to determine which individual is referenced in a specific event such as memorial, will, marriage, birth, etc.



Linfield House-front view (Michael Dwyer 1987)

# Relationship Chart & Family Grave

## Relationship: Edmond Joseph O'Dea to Mary Apjohn

Mary Apjohn is the 3rd great grandmother of Edmond Joseph O'Dea

3rd great grandmother



### Mary Apjohn

b: 1765  
Old pallas Co. Limerick  
d: 20 Sep 1833  
Kilteely graveyard



### John O'Dea

b: Abt. 1760  
Miltown Kilteely Co. Limerick  
d: Abt. 1841  
Miltown Kilteely Co. Limerick

2nd great grandfather



### Robert O'Dea

b: Bef. 1799  
Lought Kilteely, Co. Limerick  
d: 06 May 1886  
Miltown Kilteely Co. Limerick

Great grandfather



### Patrick O'Dea

b: 15 Mar 1840  
Miltown Kilteely Co. Limerick  
d: 02 Jan 1923  
Miltown, Kilteely

Paternal grandfather



### Robert O'Dea

b: 05 Dec 1877  
Miltown, Kilteely, Co. Limerick  
d: 07 Jun 1940  
Kilteely

Father



### Patrick (pake) O'Dea

b: 24 Mar 1926  
Miltown, Kilteely, Co. Limerick  
d: 27 Jun 2006  
Kildromin, Kilteely, Co. Limerick

Self



### Edmond Joseph O'Dea

b: 13 Mar 1963  
Miltown Kilteely Co. Limerick  
d:





# The O'Deas in the United States

...from Aglishcormick to Illinois and Iowa



[Main Page](#) [Darby Day](#) [1st Generation](#) ▼ [Photographs](#) [Surname Index](#) [Master Index](#) [Charts](#) [Place Index](#) [Search](#)

Darby O'Dea was born and raised on a small plot of land a little north of the village of Killeely in the Townland of Miltown in the ancient parish of Aglishcormick in County Limerick.

We know very little about Darby other than he was a laborer and that he was probably born early in the 19th century (circa 1804). Given the usual naming conventions of the 19th century for children, we can assume that Darby's father was Thomas O'Dea (first son) and his mother's name was Ellen (first daughter). He married Johanna Murnane in St. Ailbe's Church in Emly, County Tipperary, on February 6, 1842.

Johanna Murnane was born and raised in the Townland of Dromcomogue in County Limerick but attended church in Emly just over the border in County Tipperary. Besides her marriage record, we have her baptism record; she was born in April 1819 in the Townland of Dromcomogue in the Parish of Emly. Her parents were James Murnane and Catherine (Mary) Flynn. We also have the marriage record for James and Catherine (Mary) Murnane; they were married in the Parish of Knocklong on April 3, 1810. The Parishes of Emly and Knocklong abut one another and the Townland of Dromcomogue is almost exactly between the two villages.

Darby and Johanna emigrated from Galway town on April 8, 1848, during the Great Famine and arrived in New York on May 11, 1848. During the voyage, Johanna was pregnant and delivered their second son John two weeks after their arrival.



18th/19th Century mudwall cabin

Compilers: [Dennis Day](#) and [Eddie O'Dea](#)

Site updated on 17 Oct 2017 at 8:28:36 AM DB darbyday; 732 people

Page created by John Cardinal's Second Site v6.2.6. | Theme created by DayxDay



# Relationship Chart and Family grave

Great-Great-Grandfather

**Darby Day**

b. circa 1806  
Kilteely, County Limerick

m. 2/6/1842  
St. Albe's Church  
Emily, County Limerick

d. 2/12/1882  
Stark County, Illinois

Great-Great-Grandmother

**Johanna Murnane Day**

b. 7/20/1819  
Dromcomogue, County Limerick

d. 11/15/1902  
Stark County, Illinois



Great-Grandfather

**Jeremiah Day**

b. 12/19/1856  
Stark County, Illinois

m. 1/29/1883  
Camp Grove, Illinois

d. 4/12/1932  
Greene County, Iowa



Grandfather

**John Jeremiah Day**

b. 10/29/1883  
Stark County, Illinois

m. 1/12/1908  
Greene County, Iowa

d. 2/22/1976  
Greene County, Iowa



Father

**Leo James Day**

b. 5/17/1915  
Greene County, Iowa

m. 5/17/1941  
Greene County, Iowa

d. 1/3/1945  
Ardennes Forest, Belgium



Son

**Dennis Michael Day**

b. 2/14/1944  
Jefferson, Iowa

m. 6/24/1967  
Spencer, Iowa



Johanna Murnane, dau. of James Murnane, son of Thomas Murnane: Thomas Murnane and his wife Ellen are buried in Hospital cemetery.


The inscription on the gravestone reads:

Erected by James & Philip  
Marnane of Dromcomogue  
in memory of their father  
Thomas Marnane who depted  
this life March 10th, 1792, aged 48  
Also his wife Eln Marnane  
depted this life Nov 1st, 1821, aged  
60 years  
Requiescat in Pace. Amen.



# The O'Deas in Australia

...from Aglishcormick to Victoria



[Main Page](#) [1st Generation ▼](#) [Surname Index](#) [Master Index](#) [Photographs](#) [Charts](#) [Place Index](#) [Search](#)

In 1841, John and Bridget O'Dea Lynch emigrated to Australia.

In 1841, Bridget O'Dea Lynch emigrated to Australia. Bridget's brother Michael followed in 1844. He was a bounty emigrant and records state he "has a sister in the Colony married to a man named Lynch." He originally arrived in Sydney and from there it is thought that he went to The Gap near Yass in New South Wales. He married Mary Purtell in 1848 in Bowning, New South Wales. He then joined the Californian Gold Rush in the United Staes of America 1849 to look for gold. He returned to Yass in Australia before travelling south to join his sister in the Tower Hill district in south -west Victoria. He became licensee of the nearby Carleton Inn, Killarney. The pub still stands and is operated today as a motel.

Compilers: **Dennis Day** and **Eddie O'Dea**

Site updated on 20 Jun 2016 at 5:10:53 AM DB aussiedays; 102 people

Page created by John Cardinal's Second Site v6.1.0. | Theme created by DayxDay



# Relationship Chart and Family grave Tower Hill Victoria Australia

